



OPEN ACCESS

## EXTENDED REPORT

# A randomised, double-blind, multicentre, parallel-group, prospective study comparing the pharmacokinetics, safety, and efficacy of CT-P13 and innovator infliximab in patients with ankylosing spondylitis: the PLANETAS study

Won Park,<sup>1</sup> Pawel Hrycaj,<sup>2</sup> Slawomir Jeka,<sup>3</sup> Volodymyr Kovalenko,<sup>4</sup> Grygorii Lysenko,<sup>5</sup> Pedro Miranda,<sup>6</sup> Helena Mikazane,<sup>7</sup> Sergio Gutierrez-Ureña,<sup>8</sup> MieJin Lim,<sup>1</sup> Yeon-Ah Lee,<sup>9</sup> Sang Joon Lee,<sup>10</sup> HoUng Kim,<sup>11</sup> Dae Hyun Yoo,<sup>12</sup> Jürgen Braun<sup>13</sup>

**Handling editor** Tore K Kvien

► Additional material is published online only. To view please visit the journal online (<http://dx.doi.org/10.1136/annrheumdis-2012-203091>)

For numbered affiliations see end of article.

## Correspondence to

Dr W Park, Division of Rheumatology, Department of Internal Medicine, Inha University Hospital, Center for Rheumatism, 27, InhangRo, JungGu, Incheon 400-711, Republic of Korea; [parkwon@inha.ac.kr](mailto:parkwon@inha.ac.kr) and Professor J Braun, Rheumazentrum Ruhrgebiet, Landgrafstraße 15, Herne 44652, Germany; [j.braun@rheumazentrum-ruhrgebiet.de](mailto:j.braun@rheumazentrum-ruhrgebiet.de)

Accepted 19 April 2013  
Published Online First  
17 May 2013



Open Access  
Scan to access more  
free content



► <http://dx.doi.org/10.1136/annrheumdis-2012-203090>  
► <http://dx.doi.org/10.1136/annrheumdis-2012-203198>

**To cite:** Park W, Hrycaj P, Jeka S, et al. *Ann Rheum Dis* 2013;**72**:1605–1612.

## ABSTRACT

**Objectives** To compare the pharmacokinetics (PK), safety and efficacy of innovator infliximab (INX) and CT-P13, a biosimilar to INX, in patients with active ankylosing spondylitis (AS).

**Methods** Phase 1 randomised, double-blind, multicentre, multinational, parallel-group study. Patients were randomised to receive 5 mg/kg of CT-P13 (n=125) or INX (n=125). Primary endpoints were area under the concentration-time curve (AUC) at steady state and observed maximum steady state serum concentration ( $C_{max,ss}$ ) between weeks 22 and 30. Additional PK, efficacy endpoints, including 20% and 40% improvement response according to Assessment in Ankylosing Spondylitis International Working Group criteria (ASAS20 and ASAS40), and safety outcomes were also assessed.

**Results** Geometric mean AUC was 32 765.8  $\mu\text{g}/\text{ml}$  for CT-P13 and 31 359.3  $\mu\text{g}/\text{ml}$  for INX. Geometric mean  $C_{max,ss}$  was 147.0  $\mu\text{g}/\text{ml}$  for CT-P13 and 144.8  $\mu\text{g}/\text{ml}$  for INX. The ratio of geometric means was 104.5% (90% CI 94% to 116%) for AUC and 101.5% (90% CI 95% to 109%) for  $C_{max,ss}$ . ASAS20 and ASAS40 responses at week 30 were 70.5% and 51.8% for CT-P13 and 72.4% and 47.4% for INX, respectively. In the CT-P13 and INX groups more than one adverse event occurred in 64.8% and 63.9% of patients, infusion reactions occurred in 3.9% and 4.9%, active tuberculosis occurred in 1.6% and 0.8%, and 27.4% and 22.5% of patients tested positive for anti-drug antibodies, respectively.

**Conclusions** The PK profiles of CT-P13 and INX were equivalent in patients with active AS. CT-P13 was well tolerated, with an efficacy and safety profile comparable to that of INX up to week 30.

## INTRODUCTION

Innovator infliximab (INX), a chimeric monoclonal antibody (mAb) to tumour necrosis factor- $\alpha$  (TNF $\alpha$ ), was the first TNF antagonist shown to be efficacious in ankylosing spondylitis (AS).<sup>1</sup> INX significantly improved the signs, symptoms, functional status, and quality of life (QOL) of patients with AS in clinical trials, with clinical improvement

seen as early as 2 weeks after initiation of therapy and an acceptable safety profile.<sup>2–4</sup> In the Ankylosing Spondylitis Study for the Evaluation of Recombinant Infliximab Therapy (ASSERT) trial, patients receiving INX also showed significant improvement versus placebo in 20% and 40% improvement response according to Assessment in Ankylosing Spondylitis International Working Group criteria (ASAS20/ASAS40), Bath Ankylosing Spondylitis Disease Activity Index (BASDAI), Bath Ankylosing Spondylitis Functional Index (BASFI) and Bath Ankylosing Spondylitis Metrology Index (BASMI), chest expansion and physical component summary score of the SF-36.<sup>2</sup> INX and other anti-TNF agents have become important components of the management of patients with active AS.<sup>5–6</sup> With current biologic therapies approaching patent expiration, there has been considerable interest in developing biosimilar products, which are highly similar but not identical and not ‘bio-identical’, to approved ‘reference’ agents.<sup>7</sup>

CT-P13 is an IgG1 chimeric human-murine mAb biosimilar to INX. CT-P13 is produced in the same type of cell-line (Sp2/0-AG14—purchased from ATCC, Cat. CRL-1581) and has an identical amino acid sequence to INX. CT-P13 and INX have demonstrated comparable in vitro primary pharmacodynamics (PD) in a range of studies (CELLTRION, Inc. Unpublished data (see online supplementary appendix A)). CT-P13 and INX showed comparable binding affinities to monomeric and trimeric forms of human TNF $\alpha$  (hTNF $\alpha$ ), transgenic mouse hTNF $\alpha$  (tmhTNF $\alpha$ ) expressed by Jurkat cells and to Fc $\gamma$  receptors and FcRn. Comparable hTNF $\alpha$  neutralising activity against a TNF $\alpha$ -sensitive mouse sarcoma cell-line (WEHI-164) has also been demonstrated. CT-P13 and INX are also comparable in terms of: lack of binding activity to human TNF $\beta$  and TNF $\alpha$  from a range of different species known not to bind infliximab; relative binding affinities to complement protein C1q; and complement-dependent cytotoxic effects and apoptotic effects against a Jurkat T-cell-line expressing tmhTNF $\alpha$ . Comparable cytotoxic activities have been achieved as a result of antibody-dependent cellular cytotoxicity evaluation

## Clinical and epidemiological research

of human peripheral blood mononuclear cells against tmhTNF  $\alpha$ -Jurkat T cells, demonstrating biosimilarity of CT-P13 and INX. Highly comparable human tissue cross-reactivity results have been observed for biotinylated CT-P13 and INX.

According to biosimilar guidelines from European Medicines Agency (EMA) and US Food and Drug Administration (FDA), comparative clinical trials for pharmacokinetics (PK) and efficacy are required for demonstration of clinical comparability, preferably double-blind, normally equivalence trials. Programme evaluating the Autoimmune disease iNvestigational drug cT-p13 in AS patients (PLANETAS) was conducted with the approval of the regulatory authorities, including the EMA. PLANETAS was not a conventional dose finding Phase 1 clinical trial but a Phase 1 biosimilar study designed to demonstrate PK equivalence and efficacy and safety comparability of CT-P13 and INX in active AS patients. Efficacy equivalence of CT-P13 and INX in a phase 3 study named Programme evaluating the Autoimmune disease iNvestigational drug cT-p13 in rheumatoid arthritis (RA) patients (PLANETRA).<sup>8</sup> PK and PD endpoints were also assessed, as the indications for the PLANETAS and PLANETRA trials were different.

### PATIENTS AND METHODS

#### Patients

Patients with active AS according to the 1984 modified New York classification criteria for  $\geq 3$  months prior to screening, with BASDAI score of  $\geq 4$  (range 0–10) and a visual analogue scale score for spinal pain of  $\geq 4$  (range 0–10) were eligible for PLANETAS study. Patients were permitted to receive both oral glucocorticoids (equivalent to  $\leq 10$  mg daily prednisolone) and nonsteroidal anti-inflammatory drugs, if they had received a stable dose for  $\geq 4$  weeks prior to screening. Additional details of patient eligibility criteria are provided online (see online supplementary appendix B).

#### Study design

This study (ClinicalTrials.gov NCT01220518) was conducted according to the Declaration of Helsinki and International Committee on Harmonisation good clinical practices. The protocol was reviewed and approved by regulatory authorities and the ethics committees of each study site. Written informed consent was obtained from all patients. The study was conducted at 46 sites across 10 countries in Europe, Asia and Latin America.

Patients were randomly assigned 1:1 to receive either 5 mg/kg of CT-P13 (CELLTRION INC, Incheon, Republic of Korea) or INX (Janssen Biotech Inc, Horsham, Pennsylvania, USA), both administered by 2-h IV infusion, at weeks 0, 2, 6 and then q8 weeks up to week 30. Patients were premedicated with antihistamine (chlorpheniramine 2–4 mg or dose of equivalent antihistamine, eg, 10 mg of cetirizine) 30–60 min prior to the start of infusion at the investigator's discretion.

Patients underwent clinical assessments and blood sampling at baseline, weeks 14 and 30. At each visit, patients were questioned about adverse events (AEs) and concomitant medications and were monitored for any clinical signs and symptoms of tuberculosis (TB). Additional study details are provided in (see online supplementary appendix C).

#### Study endpoints

The primary endpoint was to demonstrate PK equivalence at steady state (area under the concentration-time curve [AUC] and observed maximum serum concentration ( $C_{\max,ss}$ )) between CT-P13 and INX assessed between weeks 22 and 30 (doses 5 and 6). Serum blood samples for PK analysis were obtained

immediately prior to the study treatment infusion, at the end of the infusion and 1 h after the study treatment infusion. For primary PK analysis, a total of 10 serum blood samples were obtained between weeks 22 and 30. All PK analyses were conducted using a flow-through immunoassay platform (GyrolabxP; Gyros AB, Sweden).

In an equivalence trial, we conclude that two treatments are equivalent if the observable difference ( $\Delta_E$ ) between them lies within an established interval for predefined clinical equivalence margin ( $-d, d$ ). In general, the 'null hypothesis' is that the difference ( $\Delta_E$ ) is outside of the equivalence margin, that is, either  $\Delta_E > d$  or  $\Delta_E < -d$ . If collected data on the true difference  $\Delta_E$  reject the null hypothesis of 'non-equivalence' then we can accept the alternative explanation ( $-d \leq \Delta_E \leq d$ ) that the two treatments work equally well.<sup>9</sup> An equivalence margin of 80–125% was selected based on recommendations for bioequivalence trials.<sup>10–13</sup> The use of 90% confidence intervals (CIs), lying within the equivalence margin of 80–125%, was therefore considered to be the best available method of determining bioequivalence for PK comparative trials. In our PK analysis, the predetermined difference is defined by its corresponding ratio since we use the ratio of geometric means of PK endpoints.

Secondary endpoints included additional PK, efficacy, immunogenicity and safety parameters. The secondary PK endpoints included assessments of observed maximum serum concentration ( $C_{\max}$ ), minimum serum concentration ( $C_{\min}$ ), time to reach  $C_{\max}$  ( $T_{\max}$ ) up to week 30 and the comparison of the following parameters from week 22 to 30: average concentration at steady state ( $C_{av,ss}$ ); minimum concentration at steady state immediately before the next infusion ( $C_{\min,ss}$ ); swing ( $(C_{\max,ss} - C_{\min,ss}) / C_{\min,ss}$ ); degree of fluctuation ( $(C_{\max,ss} - C_{\min,ss}) / C_{av,ss}$ ); mean residence time (MRT); terminal elimination half-life calculated between doses 5 and 6 ( $T_{1/2}$ ); total body clearance ( $CL_{ss}$ ) and volume of distribution at steady state ( $V_{ss}$ ).

Efficacy endpoints were assessed at weeks 14 and 30 and included: proportion of patients achieving ASAS20 or ASAS40 responses; Ankylosing Spondylitis Disease Activity Score (ASDAS) score; change in BASDAI, BASFI and BASMI scores versus baseline; change in chest expansion score versus baseline; and QOL (assessed using the Medical Outcomes Study Short-Form Health Survey (SF-36)).

Blood samples were assessed for anti-drug antibodies (ADA) at weeks 14 and 30. Antibodies against CT-P13 or INX were measured using an electrochemiluminescent immunoassay method utilising the Meso Scale Discovery platform (MSD, Rockville, Maryland, USA).

Safety endpoints included incidence and type of AEs, serious AEs (SAEs) and incidence of infusion-related reactions, infection and changes in clinical laboratory parameters from baseline. AEs were coded using the Medical Dictionary for Regulatory Activities and severity was characterised as mild, moderate or severe. ECGs were recorded at week 30.

All patients were screened for latent or active TB by an interferon gamma release assay (IGRA) utilising QuantiFERON-TB Gold in tube (Cellestis Ltd, Australia) and chest x-ray. Patients with latent TB received prophylactic medication according to the local guidelines. For countries with an increased incidence of TB, IGRA was used to identify positive conversion from negative results at weeks 14 and 30, in line with the WHO recommendations for sole use of IGRA in non-HIV adults receiving anti-TNF therapy.<sup>14 15</sup>

#### Statistical analysis

Sample size was determined using the following criteria: a coefficient of variation (CV) of 50%, expected ratio of means=1,

2-sided  $\alpha=0.1$ , power=90%, and a 2-sided equivalence margin of 80–125% for AUC and  $C_{\max,ss}$ .<sup>16 17</sup> Recruitment of 196 patients were required to demonstrate an effect. Allowing for a drop-out rate of 20%, a minimum of 246 patients were required for randomisation.

The PK population consisted of all patients who received at least the first five doses of study treatment and provided an end of infusion sample and at least one post-treatment PK sample to facilitate calculation of AUC and  $C_{\max,ss}$ . The PK population included only patients who did not have any major protocol deviations (see online supplementary appendix D).

Primary endpoints were assessed by statistical comparison of AUC and  $C_{\max,ss}$ . Serum concentrations and PK parameters were summarised using quantitative descriptive statistics (including geometric mean and CV) by actual treatment group and study visit (and by time point for serum concentrations).

Efficacy analysis assessed the proportion of patients achieving clinical response (ASAS20/ASAS40) by logistic regression modelling including all randomised patients, with treatment as a fixed effect and the stratification factors (region, baseline BASDAI score) as covariates. Treatment effect was estimated by calculating the OR and 95% CI. Descriptive statistics for actual result and change from baseline were calculated for the following quantitative parameters: ASDAS, BASDAI, BASFI, BASMI, chest expansion and SF-36.

The safety population consisted of all patients who received at least one (full or partial) dose of either of the study treatments during any dosing period. In this population, patients were included in the CT-P13 group for safety analyses irrespective of their randomisation if they received at least one (full or partial) dose of CT-P13.

Safety analysis was performed by presenting data on hypersensitivity, ECG results, physical examination, vital sign measurements, clinical laboratory tests (haematology, clinical chemistry and urinalysis), AEs, concomitant medications and immunogenicity.

## RESULTS

### Patients

The first patient was screened in November 2010; the week 30 evaluation of the last patient was performed in December 2011. Baseline demographics are shown in table 1. Of the 250 randomised patients, 229 completed the 30-week study period and 21 discontinued study treatment prior to week 30, primarily due to AEs (5.2%) and patient withdrawal of consent (2.4%) (figure 1).

PK analyses included 223 patients. Efficacy and safety analysis were performed in all 250 patients.

### Pharmacokinetics

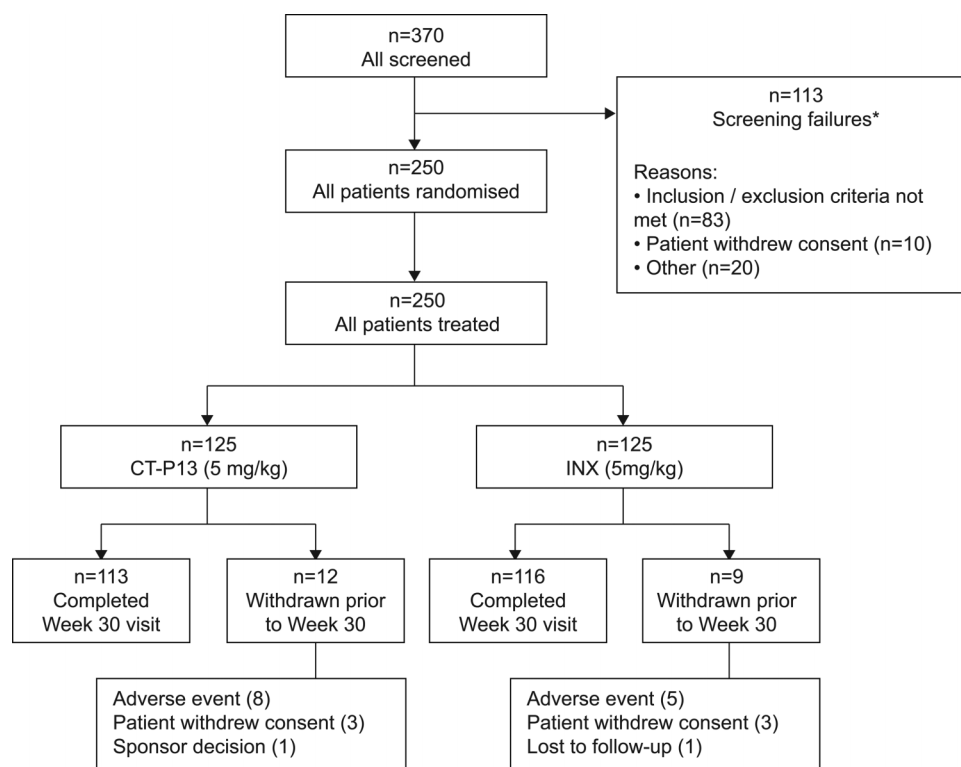
Steady state PK (AUC and  $C_{\max}$ ) was equivalent for CT-P13 (32765.8  $\mu\text{g}/\text{ml}$  and 147.0  $\mu\text{g}/\text{ml}$ ) and INX (31359.3  $\mu\text{g}/\text{ml}$  and 144.8  $\mu\text{g}/\text{ml}$ ) in the overall PK population (table 2 and figure 2). The ratio of geometric means was near 100% for AUC and  $C_{\max,ss}$ . In the ADA-negative subset of patients (n=171), geometric means of AUC and  $C_{\max,ss}$  were higher than in the overall PK population, but the ratios of geometric means in this subgroup remained near 100% for both measures. The mean secondary PK endpoints— $C_{av,ss}$ ,  $C_{\min,ss}$ , swing, degree of fluctuation, MRT,  $T_{1/2}$ ,  $CL_{ss}$ ,  $V_{ss}$ ,  $C_{\max}$ ,  $C_{\min}$  and  $T_{\max}$ —were also highly similar between CT-P13 and INX (table 3).

**Table 1** Baseline demographics\*

Characteristic	CT-P13 5 mg/kg (N=125)	INX 5 mg/kg (N=125)	Total (N=250)
Age, years	38.0 (18–69)	38.0 (18–66)	38.0 (18–69)
Gender, no. (%)			
Male	99 (79.2)	103 (82.4)	202 (80.8)
Female	26 (20.8)	22 (17.6)	48 (19.2)
Ethnicity, no. (%)			
Caucasian	97 (77.6)	92 (73.6)	189 (75.6)
Asian	16 (12.8)	13 (10.4)	29 (11.6)
Other	12 (9.6)	20 (16.0)	32 (12.8)
Height, cm	172.0 (148–198)	171.0 (147–193)	172.0 (147–198)
Weight, kg	72.70 (45.0–120.0)	76.00 (45.5–122.7)	73.75 (45.0–122.7)
Body mass index, $\text{kg}/\text{m}^2$	24.39 (18.0–38.7)	25.64 (17.5–42.0)	25.12 (17.5–42.0)
ASDAS, mean (SD)	3.8 (0.8)	3.9 (1.1)	3.9 (1.0)
BASDAI (stratification factor), no. (%)			
4–8	92 (73.6)	95 (76.0)	187 (74.8)
>8–10	33 (26.4)	30 (24.0)	63 (25.2)
BASDAI score, 0–10	6.8 (3.4–10.0)	6.6 (1.8–10.0)	6.7 (1.8–10.0)
BASFI score, 0–10	6.3 (0.7–9.8)	6.3 (0.1–10.0)	6.3 (0.1–10.0)
BASMI score, 0–10	4.0 (0.0–9.0)	4.0 (0.0–9.0)	4.0 (0.0–9.0)
Chest expansion, cm	3.0 (0.5–9.0)	2.5 (0.0–7.0)	3.0 (0.0–9.0)
SF-36 summary scores			
Physical component	34.1 (16.2–49.7)	33.1 (15.3–54.3)	33.4 (15.3–54.3)
Mental component	38.2 (15.1–63.7)	37.2 (12.5–63.6)	37.8 (12.5–63.7)
CRP level, $\text{mg}/\text{dl}$	1.1 (0.0–13.0)	1.4 (0.0–17.4)	1.3 (0.0–17.4)
ESR level, $\text{mm}/\text{h}$	33.0 (2.0–110.0)	34.0 (1.0–119.0)	34.0 (1.0–119.0)

\*Except where indicated otherwise, values are the median (minimum, maximum).

ASDAS, Ankylosing Spondylitis Disease Activity Score; BASDAI, Bath Ankylosing Spondylitis Disease Activity Index; BASFI, Bath Ankylosing Spondylitis Functional Index; BASMI, Bath Ankylosing Spondylitis Metrology Index; CRP, C-reactive protein; ESR, erythrocyte sedimentation rate; INX, innovator infliximab; SF-36, quality-of-life questionnaire (Medical Outcomes Study Short-Form Health Survey).



**Figure 1** Flowchart of patient disposition. A total of 370 patients were screened for the study, and 250 eligible patients were randomised to the CT-P13 group (N=125), and the innovator infliximab (INX) group (N=125) to receive 5 mg/kg of CT-P13 or INX, respectively. All 250 randomly assigned patients were included in the intent-to-treat population. \*Seven patients (three from CT-P13 group, four from INX group) from a potentially fraudulent study site were excluded from analyses.

### Clinical efficacy

Efficacy was highly similar between the two groups, as measured by all efficacy endpoints. ASAS20 response was achieved in 62.6% and 70.5% for CT-P13 and 64.8% and 72.4% for INX at weeks 14 (OR=0.91, 95% CI 0.53 to 1.54) and 30 (OR=0.91, 95% CI 0.51 to 1.62), respectively. ASAS40 response was achieved in 41.7% and 51.8% for CT-P13 and 45.9% and 47.4% for INX at weeks 14 (OR=0.85, 95% CI 0.51 to 1.42) and 30 (OR=1.19, 95% CI 0.70 to 2.00), respectively (see online supplementary appendix E).

The mean change from baseline in the ASDAS-CRP score was highly similar for both treatment groups at weeks 14 (−1.8; SD=1.1 vs −1.8; SD=1.1) and 30 (−1.8; SD=1.2 vs −1.7; SD=1.2) for CT-P13 and INX, respectively.

The median change from baseline to weeks 14 and 30 for CT-P13 and INX was noted in the following secondary endpoints: BASDAI score (week 14: −2.7 vs −2.7 and 30: −3.1 vs −2.5); BASFI score (week 14: −2.2 vs −2.4 and 30: −2.6 vs −2.2); BASMI score (week 14: 0.0 vs 0.0 and 30: −1.0 vs −1.0); and chest expansion score (week 14: +0.2 vs +0.5 and 30: +0.5 vs

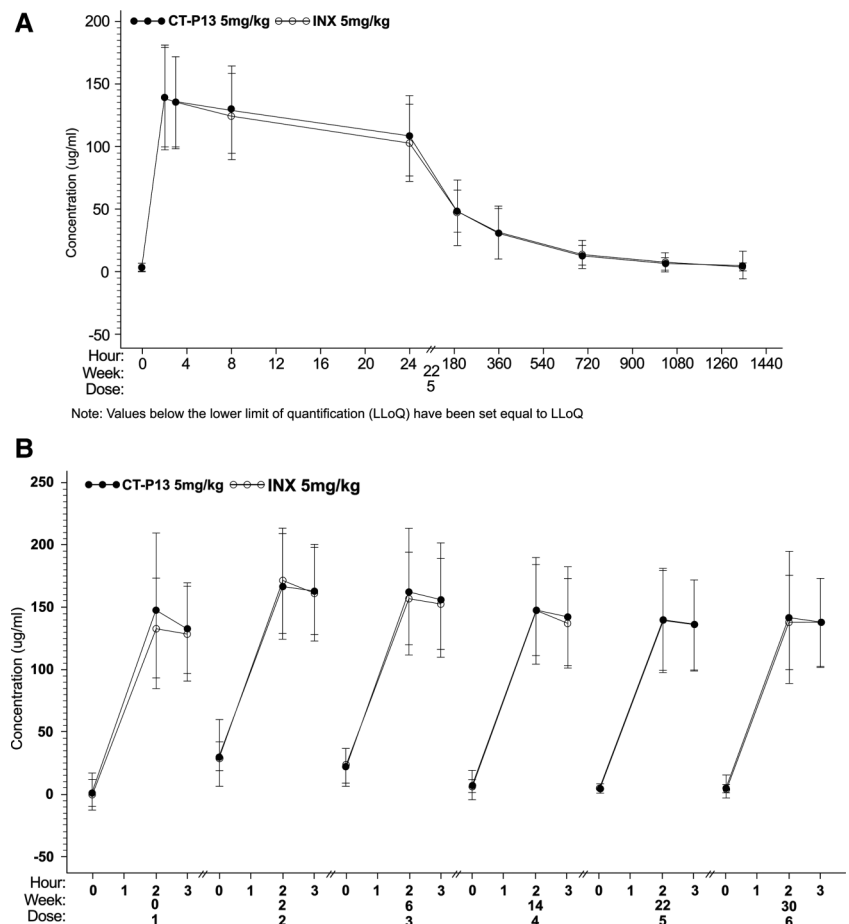
**Table 2** Overall steady state PK between weeks 22 and 30

Parameter	Treatment	n	Geometric mean	Ratio (%) of geometric means	90% CI of ratio (%)
PK population					
AUC (µgh/ml)	CT-P13	112	32765.8	104.5	94.3 to 115.8
	INX	110	31359.3		
C <sub>max,ss</sub> (µg/ml)	CT-P13	113	147.0	101.5	94.7 to 108.9
	INX	110	144.8		
ADA-negative subset					
AUC (µgh/ml)	CT-P13	84	37505.2	103.4	94.6 to 113.1
	INX	86	36266.9		
C <sub>max,ss</sub> (µg/ml)	CT-P13	85	153.9	104.7	97.2 to 112.9
	INX	86	146.9		

The primary PK endpoints of the observed AUC and C<sub>max,ss</sub> in patients treated with CT-P13 and INX at steady state were analysed using an analysis of covariance with treatment as a fixed effect and region and baseline BASDAI score fitted as covariates. Point estimates and 90% CI for differences on the log scale were exponentiated to obtain estimates for ratios of geometric means on the original scale.

ADA, anti-drug antibodies; AUC, area under the concentration-time curve; C<sub>max,ss</sub>, observed maximum steady state serum concentration; CI, confidence interval; INX, innovator infliximab; PK, pharmacokinetics.

**Figure 2** Mean ( $\pm$ SD) serum concentrations of innovator infliximab (INX) and CT-P13 versus time by treatment. Serum concentration of drug was measured using a flow-through immunoassay platform (GyrolabxP). Mean serum drug concentration profiles of CT-P13 and INX were plotted by treatment on scheduled sample times. (A) Mean serum drug concentration following administration of Dose 5 (10 scheduled sample times between weeks 22 and 30) of CT-P13 (5 mg/kg) or INX (5 mg/kg). (B) Mean serum drug concentration of CTP13 and INX following administration of Doses 1–6. Blood samples were obtained 15 min prior to infusion, at the end of the infusion and 1 h postinfusion.



+0.5), respectively. Similarly, SF-36 score increased from baseline to week 14 and 30 similarly at both time points and in both treatment groups. At week 30, a significant improvement from baseline in the physical component score of the SF-36 (median change from baseline 7.6 vs 8.5, respectively) was observed in both treatment groups. A similar effect was observed for the mental component score of the SF-36 (6.5 vs 5.2).

An ASAS20 response for CT-P13 and INX at week 30, assessed according to baseline C-reactive protein (CRP) levels, was achieved in 75.2% and 77.6% of patients with a baseline CRP of  $>3$  times the upper limit of normal (ULN) (OR=0.76: 95% CI 0.32 to 1.84) and in 68.9% and 67.2% of patients with a baseline CRP  $\leq 3 \times$ ULN, respectively (OR=0.99: 95% CI 0.45 to 2.17). The median change from baseline to week 30 in CRP and erythrocyte sedimentation rate was  $-0.7$  mg/dl and  $-21.0$  mm/h for CT-P13 and  $-0.8$  mg/dl and  $-19.5$  mm/h for INX, respectively.

Overall, no statistical significance in clinical response between the treatment groups at weeks 14 and 30 was found.

### Immunogenicity

Antibodies to infliximab with active AS patients were detected in 9.1% (n=11) and 11.0% (n=13) of patients for CT-P13 and INX at week 14 and 27.4% (n=32) and 22.5% (n=25) of patients for CT-P13 and INX, respectively, at week 30.

The efficacy results were analysed for ADA-positive and ADA-negative patients in a post-hoc analysis, and it was found that ADA-positive patients had a less robust ASAS20 response (see online supplementary appendix F). No statistically significant difference between the CT-P13 and INX treatment groups was observed at week 14 and 30.

### Safety

Overall treatment-emergent AEs (TEAEs) were reported in 83 (64.8%) patients and 78 (63.9%) patients from the CT-P13 and INX treatment arms, respectively (table 4). The majority of TEAEs was mild-to-moderate in intensity. The TEAEs considered by the investigator to be related to the study treatment and most frequently reported for patients were: CT-P13: increased alanine transaminase (ALT) (n=14, 10.9%) and aspartate transaminase (AST) (n=12, 9.4%), latent TB (n=5, 3.9%), urinary tract infection (n=5, 3.9%), serum creatine phosphokinase elevation (n=4, 3.1%) and  $\gamma$ -glutamyltransferase elevation (n=4, 3.1%); INX: increased ALT (n=13, 10.7%) and AST (n=10, 8.2%),  $\gamma$ -glutamyltransferase elevation (n=5, 4.1%) and latent TB (n=4, 3.3%). Infusion-related reactions occurred in five (3.9%) and six (4.9%) patients in CT-P13 and INX groups, respectively. The proportions of infusion-related reactions in CT-P13 and INX groups were 3.1% (n=1) vs 11.1% (n=3) for ADA-positive group and 3.4% (n=3) and 2.2% (n=2) for ADA-negative group, respectively.

Similar rates of SAEs were reported between treatment groups, regardless of the relationship with the study drug (see online supplementary appendix G). No deaths were reported during the study.

### DISCUSSION

This randomised, double-blind, multicentre and multinational, parallel-group, prospective PLANETAS study assessed the PK equivalence and safety and efficacy comparability of multiple doses of CT-P13 (5 mg/kg) versus INX (5 mg/kg) administered up to week 30 in active AS patients.

The primary outcome, steady-state PK (AUC and  $C_{max,ss}$ ), was shown to be equivalent for CT-P13 and INX (90% CIs for the

## Clinical and epidemiological research

**Table 3** Mean (CV) Serum pharmacokinetic parameters of INX: pharmacokinetic population

Parameter	CT-P13 (N=113)		INX (N=110)	
<b>Dose 1 (Week 0)</b>				
C <sub>max</sub> (μg/ml)	n=109	155.8 (37.2)	n=107	145.3 (25.3)
C <sub>min</sub> (μg/ml)	n=109	29.1 (40.1)	n=108	29.8 (40.8)
T <sub>max</sub> (h)	n=109	2.0 (1.9, 3.2)	n=107	2.1 (2.0, 3.5)
<b>Dose 2 (Week 2)</b>				
C <sub>max</sub> (μg/ml)	n=112	175.6 (20.9)	n=108	181.4 (23.8)
C <sub>min</sub> (μg/ml)	n=110	20.1 (56.1)	n=108	22.8 (72.0)
T <sub>max</sub> (h)	n=112	2.1 (1.8, 3.1)	n=108	2.1 (1.8, 3.2)
<b>Dose 3 (Week 6)</b>				
C <sub>max</sub> (μg/ml)	n=113	172.3 (26.8)	n=110	166.3 (22.8)
C <sub>min</sub> (μg/ml)	n=112	6.9 (80.2)	n=110	7.1 (77.6)
T <sub>max</sub> (h)	n=113	2.1 (2.0, 3.2)	n=110	2.1 (2.0, 3.2)
<b>Dose 4 (Week 14)</b>				
C <sub>max</sub> (μg/ml)	n=113	158.4 (24.0)	n=110	153.6 (27.5)
C <sub>min</sub> (μg/ml)	n=112	4.5 (83.6)	n=110	4.8 (75.2)
T <sub>max</sub> (h)	n=113	3.0 (2.0, 3.3)	n=110	2.1 (2.0, 4.8)
<b>Dose 5 (Week 22)</b>				
C <sub>av,ss</sub> (μg/ml)	n=111	26.0 (34.2)	n=110	25.7 (45.7)
C <sub>min,ss</sub> (μg/ml)	n=108	4.2 (139.5)	n=108	3.6 (88.1)
Swing	n=108	102.9 (108.1)	n=108	108.8 (100.7)
Degree of fluctuation	n=108	6.2 (33.9)	n=108	6.8 (50.0)
Mean residence time (h)	n=103	353.7 (38.1)	n=98	368.2 (37.3)
T <sub>1/2</sub> (h)	n=103	292.5 (32.2)	n=98	298.3 (32.9)
T <sub>max</sub> (h)	n=113	3.0 (2.0, 359.1)	n=110	3.0 (2.0, 168.0)
CL <sub>ss</sub> (ml/h)	n=111	12.7 (73.1)	n=110	14.2 (77.7)
V <sub>ss</sub> (ml)	n=103	3830.8 (30.8)	n=98	4294.9 (78.3)
<b>Dose 6 (Week 30)</b>				
C <sub>max</sub> (μg/ml)	n=108	152.8 (31.9)	n=108	147.8 (26.4)
T <sub>max</sub> (h)	n=108	2.1 (1.9, 3.3)	n=108	2.2 (2.0, 4.0)

T<sub>max</sub> was reported as median (minimum, maximum).

C<sub>max</sub> and T<sub>max</sub> were set to missing if the highest concentrations in the profiles occurred at time zero.

C<sub>max</sub> was set to missing if the concentration was below the lower limit of quantification or the same as other concentrations.

C<sub>max</sub>, maximum serum concentration; C<sub>av,ss</sub>, average concentration at steady state; CL<sub>ss</sub>, total clearance at steady state; C<sub>min</sub>, minimum concentration immediately before the next application; C<sub>min,ss</sub>, minimum concentration immediately before the next application at steady state; CV, coefficient of variation; INX, innovator infliximab; MRT, mean residence time; T<sub>1/2</sub>, terminal elimination half-life; T<sub>max</sub>, time to reach C<sub>max</sub>; V<sub>ss</sub>, volume of distribution at steady state.

mean AUC and C<sub>max,ss</sub> were 94–116% and 95–109%, respectively). These values were within the predefined margins for equivalence (80–125%), thereby satisfying the criteria set for PK equivalence of CT-P13 to INX. This predefined margin is considered appropriate from a clinical perspective because of the broad therapeutic window and high variability of INX.<sup>18–19</sup> AUC and C<sub>max,ss</sub> were higher in the ADA-negative subset of patients in this study, versus values for the overall PK population. Published PK data for the 5mg/kg dose of INX in AS is sparse,<sup>20</sup> but the values for AUC and C<sub>max,ss</sub> reported in this study are similar to those reported in previous studies of INX monotherapy using a similar dosing pattern in Crohn's disease.<sup>21</sup> The coadministration of methotrexate (MTX) is thought to increase concentrations of INX in patients with rheumatoid arthritis (RA).<sup>22–25</sup> Although coadministration of MTX with INX in AS is not recommended,<sup>5–6</sup> the effect of coadministration on CT-P13 should be further studied—especially in patients with peripheral arthritis. In patients with AS, the possible influence of ADA on circulating concentrations of INX, including the potential consequence, an impaired clinical response, has been studied but yielded conflicting results.<sup>26–28</sup> Nevertheless, INX monotherapy remains a useful treatment for the majority of patients with AS, for which long-term data are available.<sup>29–30</sup>

The mean secondary PK endpoints were also highly similar between CT-P13 and INX groups. CT-P13 was also equivalent

to INX up to week 30 in terms of efficacy as assessed by ASAS20/ASAS40 criteria. The median change from baseline in BASDAI, BASFI, BASMI, chest expansion and SF-36 score was highly similar at weeks 14 and 30, underlining the benefit of CT-P13 and INX in both physician-measured and patient-reported outcomes.

The efficacy outcomes of this trial were comparable to those reported previously in pivotal randomised controlled trials of INX in AS.<sup>1–2</sup> The ASAS20 and ASAS40 responses at week 30 in this study for INX (72.4% and 47.4%, respectively) are similar to those reported at week 24 in the ASSERT trial (61.2% and 47.0%, respectively). The magnitude of improvements in secondary efficacy endpoints with INX in this trial were also comparable to those reported in ASSERT.<sup>2</sup> Improvements from baseline to week 30 of the physical component of the SF-36 in the INX group in this study were comparable to those reported in ASSERT (8.5 vs 10.2, respectively), as were the median baseline scores of the physical component of the SF-36 (28.8 vs 33.1, respectively).<sup>2</sup> However, the improvements from baseline to week 30 of the mental component of the SF-36 in this study were not seen in ASSERT (5.2 vs 2.7, respectively), likely reflecting the higher baseline median scores of the mental component of SF-36 in ASSERT (37.2 vs 47.6, respectively).<sup>2</sup> ASDAS C was assessed in this study, and values were found to be highly similar between treatment groups at both weeks 14 and 30.<sup>31</sup>

**Table 4** Related treatment-emergent adverse events reported in at least 1% of patients in either treatment group, no (%)

	CT-P13 5 mg/kg (N=128)	INX 5 mg/kg (N=122)	Total (N=250)
Alanine aminotransferase increased	14 (10.9)	13 (10.7)	27 (10.8)
Aspartate aminotransferase increased	12 (9.4)	10 (8.2)	22 (8.8)
γ-glutamyltransferase increased	4 (3.1)	5 (4.1)	9 (3.6)
Latent tuberculosis*	5 (3.9)	4 (3.3)	9 (3.6)
Upper respiratory tract infection	3 (2.3)	2 (1.6)	5 (2.0)
Nasopharyngitis	3 (2.3)	2 (1.6)	5 (2.0)
Pharyngitis	2 (1.6)	3 (2.5)	5 (2.0)
Urinary tract infection	5 (3.9)	0	5 (2.0)
Bacteriuria	0	2 (1.6)	2 (0.8)
Tonsillitis	0	2 (1.6)	2 (0.8)
Tuberculosis	2 (1.6)	1 (0.8)	3 (1.2)
Infusion-related reaction	5 (3.9)	6 (4.9)	11 (4.4)
Serum creatinine phosphokinase increased	4 (3.1)	1 (0.8)	5 (2.0)
Neutropenia	2 (1.6)	2 (1.6)	4 (1.6)
Leukopenia	0	2 (1.6)	2 (0.8)
Pyrexia	2 (1.6)	1 (0.8)	3 (1.2)
Headache	3 (2.3)	1 (0.8)	4 (1.6)
Rash	0	3 (2.5)	3 (1.2)
Urticaria	0	2 (1.6)	2 (0.8)
Nausea	1 (0.8)	2 (1.6)	3 (1.2)

The total number of treatment-emergent adverse events count included all related patient events. At each level of summarisation, a patient was counted once if he or she reported one or more related events. Only the most severe event was counted. Patients who received at least one (full or partial) dose of CT-P13 were included in the CT-P13 group for safety analyses, irrespective of their randomisation.

\*Latent tuberculosis (TB) as an AE refers to patients who originally had a negative TB test and became positive subsequently. These cases were considered as an AE as patients were treated for the reasons related to latent TB.  
INX, innovator infliximab.

Comparison of ASAS20 and ASAS40 values for CT-P13 and INX by ADA status showed no statistical significance despite the observational difference in the ADA-positive subset, the latter probably due to the lack of patient numbers.

Overall, CT-P13 and INX were well-tolerated and their safety profiles were comparable. The majority of patients had negative immunogenicity results according to the electrochemiluminescent immunoassay method at weeks 14 and 30. Extra-articular manifestations such as uveitis, psoriasis and inflammatory bowel disease were not assessed in this study, but the single cases of uveitis and psoriasis in the INX group were reported as AEs. The incidence of AEs, SAEs, infections and infusion-related reactions with INX in this trial were comparable to that seen in ASSERT.<sup>2</sup>

There were also comparably low rates of TB up to week 30. The incidence of TB in our study (1.2% overall: CT-P13 (n=2), INX group (n=1)) is higher than in ASSERT, a trial of INX in AS, in which no cases were reported during the study period.<sup>2</sup> A difference in the study site locations may partly explain this; ASSERT included only centres in North America and Western Europe, whereas our trial included centres in countries known to have higher TB incidence. Interestingly, the incidence of active TB in our study is similar to those of the two major trials of the 3 mg/kg dose of INX in RA, Anti-TNF Trial in Rheumatoid Arthritis with Concomitant Therapy (ATTRACT) (0.3%) and Active-Controlled Study of Patients Receiving Infliximab for the Treatment of Rheumatoid Arthritis of Early

Onset (ASPIRE) (0.5%), which included centres only in North America and Western Europe.<sup>18 32</sup>

According to the National Institute of Health and Clinical Excellence (NICE) incremental cost-effectiveness ratios (ICERs), INX has not been recommended for treatment of AS because NICE experts did not consider it to be cost-effective. However, this decision should be revisited based on the results of this study of CT-P13 in AS and its lower future price. This may have a potentially positive impact on healthcare costs.

In this PLANETAS study, PK equivalence for CT-P13 and INX was demonstrated. There was no significant difference in efficacy and safety data. Although only comparable clinical efficacy was shown in this study, clinical bioequivalence was investigated in a Phase 3 study in RA.<sup>8</sup>

The positive results of this study provide a rationale for future studies of CT-P13 in the treatment of other TNF-mediated inflammatory diseases.

## CONCLUSIONS

CT-P13 and INX were shown to be equivalent in terms of AUC and  $C_{max,ss}$  in patients with active AS. Clinical efficacy endpoints, including ASAS20 and ASAS40 responses, were highly similar between CT-P13 and INX groups. CT-P13 was well-tolerated with an immunogenicity and safety profile comparable to that of INX up to week 30.

## Author affiliations

<sup>1</sup>Division of Rheumatology, Department of Internal Medicine, Inha University Hospital, Incheon, Republic of Korea

<sup>2</sup>Department of Rheumatology and Clinical Immunology, Poznan University of Medical Sciences, Poznań, Poland

<sup>3</sup>Department of Rheumatology and Connective Tissue Diseases, "NASZ LEKARZ" Praktyka Grupowa Lekarzy Rodzinnych z Przychodnia, Toruń, Poland

<sup>4</sup>Section of Non-coronary Myocardial Diseases and Clinical Rheumatology, National Scientific Center, Kiev, Ukraine

<sup>5</sup>Department of Family Medicine, Kyiv Regional Clinical Hospital, Kiev, Ukraine

<sup>6</sup>Rheumatology Department, Centro de Estudios Reumatológicos, Santiago, Chile

<sup>7</sup>Outpatient Clinic ORTO, Riga, Latvia

<sup>8</sup>Rheumatology Department, Antiguo Hospital Civil de Guadalajara, Guadalajara, Mexico

<sup>9</sup>Division of Rheumatology, Department of Internal Medicine, Kyung Hee University Hospital, Seoul, Republic of Korea

<sup>10</sup>Division of Biostatistics, Department of Internal Medicine, University of New Mexico, Albuquerque, New Mexico, USA

<sup>11</sup>Clinical Planning and Medical Affairs Department, CELLTRION, Inc, Incheon, Republic of Korea

<sup>12</sup>Division of Rheumatology, Hanyang University Hospital for Rheumatic Diseases, Seoul, Republic of Korea

<sup>13</sup>Medical Director of Rheumazentrum Ruhrgebiet, a Medical Center specialised for rheumatic diseases, Rheumazentrum Ruhrgebiet, Herne, Germany

**Acknowledgements** The authors wish to thank the patients and study personnel who made this trial possible, and the PLANETAS study investigators:

Bulgaria; Kadinov V, Rashkov R; Chile; Aguirre V, Goecke Sariego I, Gutierrez M; Colombia; Otero Escalante WJ; Korea (Republic of); Kang SW, Kim HY, Kim TH, Park YB, Park YE, Song JS, Suh CH; Latvia; Anderson D, Saulite-Kandevica D; Mexico; Abud-Mendoza C, Araiza R, Cons Molina F, Morales-Torres J, Pacheco-Tena C; Poland; Brzezicki J, Brzosko M, Jaworski J, Korkosz M, Krogulec M, Piotrowski M, Ruzga Z, Wiland P; Portugal; Vaz Pato J; Spain; Blanco Garcia F, Diaz-González F; Ukraine; Amosova K, Dyadyk O, Gnylorybov A, Smiyana S, Ter-Vartanian S; USA; Ahn C. Editorial support (writing assistance, assembling tables and figures, collating author comments, grammatical editing and referencing) was provided by Vanessa Lane, Peter Hopkins and Rory Elsom (TVF BioLogic, London, UK) and was funded by CELLTRION Inc, Incheon, Republic of Korea.

**Contributors** WP, SJL and HUK were involved in the conception and design of the study, acquisition of data and/or analysis and interpretation of data; drafting of manuscript and revising it critically for important intellectual content; final approval of the version to be published. DHY and JB were involved in the conception and design of the study; drafting of manuscript and revising it critically for important intellectual content; final approval of the version to be published. PH, SJ, VK, GL, PM, HM, SGU, MJL and YAL were involved in the acquisition of data; drafting of

## Clinical and epidemiological research

manuscript and revising it critically for important intellectual content; final approval of the version to be published. The project management, clinical and medical monitoring, pharmacovigilance (PVG), data management, analysis of pharmacokinetic (PK) data, biostatistical analysis, and medical writing were performed under contract with PPD, Inc. in collaboration with the CELLTRION, Inc.

**Funding** This study was funded by CELLTRION Inc.

**Competing interests** All authors have completed the Unified Competing Interest form at [http://www.icmje.org/coi\\_disclosure.pdf](http://www.icmje.org/coi_disclosure.pdf) (available on request from the corresponding author) and declare: financial support for the submitted work from Celltrion: WP, DHY, PH, VK, PM and YAL received research grants and, or consultancy fees, and logistics support; SJL, SJ, GL, HM, SGU and MJL received research grants and/ or consultancy fees only; HUK is a full-time employee of Celltrion. JB has received payment for consultancy and lectures from Celltrion.

**Patient consent** Obtained.

**Ethics approval** The protocol was reviewed and approved by each site's institutional review board or independent ethics committee.

**Provenance and peer review** Not commissioned; externally peer reviewed.

**Data sharing statement** All data available for this paper are included in the manuscript and online supplementary appendices.

**Open Access** This is an Open Access article distributed in accordance with the Creative Commons Attribution Non Commercial (CC BY-NC 3.0) license, which permits others to distribute, remix, adapt, build upon this work non-commercially, and license their derivative works on different terms, provided the original work is properly cited and the use is non-commercial. See: <http://creativecommons.org/licenses/by-nc/3.0/>

## REFERENCES

- Braun J, Brandt J, Listing J, *et al.* Treatment of active ankylosing spondylitis with infliximab: a randomised controlled multicentre trial. *Lancet* 2002;359:1187–93.
- van der Heijde D, Dijkmans B, Geusens P, *et al.* Efficacy and safety of infliximab in patients with ankylosing spondylitis: results of a randomized, placebo-controlled trial (ASSERT). *Arthritis Rheum* 2005;52:582–91.
- Braun J, Landewé R, Hermann KG, *et al.* Major reduction in spinal inflammation in patients with ankylosing spondylitis after treatment with infliximab: results of a multicenter, randomized, double-blind, placebo-controlled magnetic resonance imaging study. *Arthritis Rheum* 2006;54:1646–52.
- Braun J, Landewé R, Hermann KG, *et al.* Sustained reduction in spinal inflammation in patients with ankylosing spondylitis after treatment with infliximab. *Ann Rheum Dis* 2007;66(Suppl II):64.
- Braun J, van den Berg R, Baraliakos X, *et al.* 2010 update of the ASAS/EULAR recommendations for the management of ankylosing spondylitis. *Ann Rheum Dis* 2011;70:896–904.
- van der Heijde D, Sieper J, Maksymowych WP, *et al.* 2010 update of the international ASAS recommendations for the use of anti-TNF agents in patients with axial spondyloarthritis. *Ann Rheum Dis* 2011;70:905–8.
- Dörner T, Strand V, Castañeda-Hernández G, *et al.* The role of biosimilars in the treatment of rheumatic diseases. *Ann Rheum Dis* 2013;72:322–8.
- Yoo DH, Hrycaj P, Miranda P, *et al.* A randomised, double-blind, parallel-group, phase 3 study to demonstrate equivalence in efficacy and safety of CT-P13 compared with innovator infliximab when co-administered with methotrexate in patients with active rheumatoid arthritis: The PLANETRA study. *Ann Rheum Dis* 2013. doi:10.1136/annrheumdis-2012-203090
- Dasgupta A, Lawson KA, Wilson JP. Evaluating equivalence and non-inferiority trials. *Am J Health Syst Pharm* 2010;67:1337–43.
- Health Canada guidance document—Comparative bioavailability standards: Formulations used for systemic effects. [http://www.hc-sc.gc.ca/dhp-mps/prodpharma/applic-demande/guide-ld/bio/gd\\_standards\\_ld\\_normes-eng.php](http://www.hc-sc.gc.ca/dhp-mps/prodpharma/applic-demande/guide-ld/bio/gd_standards_ld_normes-eng.php) (accessed Apr 2013).
- U.S. Department of Health and Human Services, Food and Drug Administration, Center for Drug Evaluation and Research (CDER), March 2003—Guidance for Industry—Bioavailability and Bioequivalence Studies for Orally Administered Drug Products — General Considerations. <http://www.fda.gov/downloads/Drugs/.../Guidances/ucm070124.pdf> (accessed Feb 2010).
- World Health Organization. Revision/Update of the Guidance on the Selection of Comparator Pharmaceutical Products for Equivalence Assessment of Interchangeable Multisource (Generic) Products, World Health Organization working document QAS/05.143/Rev.1, 2005.
- European Medicines Agency. GUIDELINE ON THE INVESTIGATION OF BIOEQUIVALENCE, London, January 2010; Doc. Ref.: CPMP/EWP/QWP/1401/98 Rev. 1/ Corr. [http://www.emea.europa.eu/docs/en\\_GB/document\\_library/Scientific\\_guideline/2010/01/WC500070039.pdf](http://www.emea.europa.eu/docs/en_GB/document_library/Scientific_guideline/2010/01/WC500070039.pdf) (accessed Feb 2010).
- World Health Organization. *Commercial serodiagnostic tests for diagnosis of tuberculosis: policy statement*. Geneva: WHO, 2011.
- National Institute of Clinical Excellence guideline. Clinical diagnosis and management of tuberculosis, and measures for its prevention and control 2011 [Online]. <http://guidance.nice.org.uk/cg117/niceguidance/pdf/english> (accessed 29 Nov 2012).
- World Health Organization. Guidelines on evaluation of similar biotherapeutic products, 2009. [http://www.who.int/biologicals/areas/biological\\_therapeutics/BIO\\_THERAPEUTICS\\_FOR\\_WEB\\_22APRIL2010.pdf](http://www.who.int/biologicals/areas/biological_therapeutics/BIO_THERAPEUTICS_FOR_WEB_22APRIL2010.pdf) (accessed 15 Jan 2013).
- European Medicines Agency. CHMP Efficacy Working Party. Therapeutic Subgroup on Pharmacokinetics (EWP-PK). Questions & Answers on the Bioavailability and Bioequivalence Guideline. EMEA/CHMP/EWP/40326/2006.
- Maini R, St Clair EW, Breedveld F, *et al.* Infliximab (chimeric anti-tumour necrosis factor alpha monoclonal antibody) versus placebo in rheumatoid arthritis patients receiving concomitant methotrexate: a randomised phase III trial. ATTRACT Study Group. *Lancet* 1999;354:1932–9.
- Fasanmade AA, Adedokun OJ, Ford J, *et al.* Population pharmacokinetic analysis of infliximab in patients with ulcerative colitis. *Eur J Clin Pharmacol* 2009;65:1211–28.
- Ternant D, Mulleman D, Laufferon F, *et al.* Influence of methotrexate on infliximab pharmacokinetics and pharmacodynamics in ankylosing spondylitis. *Br J Clin Pharmacol* 2012;73:55–65.
- US Food and Drug Administration. Infliximab Product Approval Information: Clinical Pharmacology Review, dated 20 July 1998. <http://www.fda.gov/downloads/Drugs/DevelopmentApprovalProcess/HowDrugsareDevelopedandApproved/ApprovalApplications/TherapeuticBiologicApplications/ucm107704.pdf> (accessed 29 Nov 2012).
- US Food and Drug Administration. Infliximab Product Approval Information: Clinical Pharmacology Review, dated 1 November 1999. <http://www.fda.gov/downloads/Drugs/DevelopmentApprovalProcess/HowDrugsareDevelopedandApproved/ApprovalApplications/TherapeuticBiologicApplications/ucm107725.pdf> (accessed 29 Nov 2012).
- Klotz U, Teml A, Schwab M. Clinical pharmacokinetics and use of infliximab. *Clin Pharmacokinet* 2007;46:645–60.
- Maini RN, Breedveld FC, Kalden JR, *et al.* Therapeutic efficacy of multiple intravenous infusions of anti-tumor necrosis factor alpha monoclonal antibody combined with low-dose weekly methotrexate in rheumatoid arthritis. *Arthritis Rheum* 1998;41:1552–63.
- Mori S. A relationship between pharmacokinetics (PK) and the efficacy of infliximab for patients with rheumatoid arthritis: characterization of infliximab-resistant cases and PK-based modified therapy. *Mod Rheumatol* 2007;17:83–91.
- deVries MK, Wolbink GJ, Stapel SO, *et al.* Decreased clinical response to infliximab in ankylosing spondylitis is correlated with anti-infliximab formation. *Ann Rheum Dis* 2007;66:1252–4.
- Ducourau E, Mulleman D, Paintaud G, *et al.* Antibodies toward infliximab are associated with low infliximab concentration at treatment initiation and poor infliximab maintenance in rheumatic diseases. *Arthritis Res Ther* 2011; 13:R105.
- Krzysiek R, Breban M, Ravaud P, *et al.* Circulating concentration of infliximab and response to treatment in ankylosing spondylitis: results from a randomized control study. *Arthritis Rheum* 2009;61:569–76.
- Heldmann F, Brandt J, van der Horst-Bruinsma IE, *et al.* The European Ankylosing Spondylitis Infliximab Cohort (EASIC): a European multicentre study of long term outcomes in patients with ankylosing spondylitis treated with infliximab. *Clin Exp Rheumatol* 2011;29:672–80.
- Baraliakos X, Listing J, Fritz C, *et al.* Persistent clinical efficacy and safety of infliximab in ankylosing spondylitis after 8 years—early clinical response predicts long-term outcome. *Rheumatology (Oxford)* 2011;50:1690–9.
- Lukas C, Landewé R, Sieper J, *et al.* Development of an ASAS-endorsed disease activity score (ASDAS) in patients with ankylosing spondylitis. *Ann Rheum Dis* 2009;68:18–24.
- St Clair EW, van der Heijde DM, Smolen JS, *et al.* Combination of infliximab and methotrexate therapy for early rheumatoid arthritis: a randomized, controlled trial. *Arthritis Rheum* 2004;50:3432–43.





# A randomised, double-blind, multicentre, parallel-group, prospective study comparing the pharmacokinetics, safety, and efficacy of CT-P13 and innovator infliximab in patients with ankylosing spondylitis: the PLANETAS study

Won Park, Pawel Hrycaj, Slawomir Jeka, et al.

*Ann Rheum Dis* 2013 72: 1605-1612 originally published online May 16, 2013

doi: 10.1136/annrheumdis-2012-203091

---

Updated information and services can be found at:

<http://ard.bmj.com/content/72/10/1605.full.html>

---

*These include:*

## Data Supplement

*"Supplementary Data"*

<http://ard.bmj.com/content/suppl/2013/05/16/annrheumdis-2012-203091.DC1.html>

## References

This article cites 21 articles, 7 of which can be accessed free at:

<http://ard.bmj.com/content/72/10/1605.full.html#ref-list-1>

Article cited in:

<http://ard.bmj.com/content/72/10/1605.full.html#related-urls>

## Open Access

This is an Open Access article distributed in accordance with the Creative Commons Attribution Non Commercial (CC BY-NC 3.0) license, which permits others to distribute, remix, adapt, build upon this work non-commercially, and license their derivative works on different terms, provided the original work is properly cited and the use is non-commercial. See: <http://creativecommons.org/licenses/by-nc/3.0/>

## Email alerting service

Receive free email alerts when new articles cite this article. Sign up in the box at the top right corner of the online article.

---

To request permissions go to:

<http://group.bmj.com/group/rights-licensing/permissions>

To order reprints go to:

<http://journals.bmj.com/cgi/reprintform>

To subscribe to BMJ go to:

<http://group.bmj.com/subscribe/>

## Topic Collections

Articles on similar topics can be found in the following collections

[Editor's choice](#) (115 articles)  
[Open access](#) (403 articles)  
[Ankylosing spondylitis](#) (361 articles)  
[Calcium and bone](#) (631 articles)  
[Connective tissue disease](#) (3614 articles)  
[Degenerative joint disease](#) (3932 articles)  
[Immunology \(including allergy\)](#) (4296 articles)  
[Musculoskeletal syndromes](#) (4206 articles)  
[Rheumatoid arthritis](#) (2758 articles)

---

## Notes

---

To request permissions go to:

<http://group.bmj.com/group/rights-licensing/permissions>

To order reprints go to:

<http://journals.bmj.com/cgi/reprintform>

To subscribe to BMJ go to:

<http://group.bmj.com/subscribe/>